



World Analysis

Designed to Empower Users. World Analysis offers an extensive suite of features and valuable content

Supply and Demand

Historical in-depth market analysis with long-term outlooks based on industry expertise.

Global Capacity

Historical and forecast plant capacities by country/territory, company/shareholder, and location. Capacity integration and top producer / consum

Trade Grids

Global trade flows between regions and countries/territories, with a five-year outlook and 10th year forecas

Price, Cost, and Margin

Quarterly updates of prices, costs, and margins for major regions, with 10 years of history and long-term forecasts to

Executive Report

Analysis and projections of key trends and turning points in chemical markets and end-use industries.

Diverse Data Presentation

Online databases with export capabilities, API, Power BI dashboard, Excel data tables, and graphics.

World Analysis Spans Five Major Value Chains

Aromatics & Fibers

Benzene & Pyrolysis
 Gasoline [Pygas] *
 Cumene/Phenol/Acetone
 Nylon Feedstocks
 Nylon Fibers
 Paraxylene *
 Polyester
 PTA, DMT, and
 Isophthalic Acid
 Polyether Polyols
 Styrene *
 Toluene & Xylenes *
 MDI
 TDI

Olefins & Derivatives

Acrylates & SAP *
 Acrylonitrile
 Butadiene *
 Butylenes
 Ethylene Oxide &
 Ethylene Glycol *
 Ethylene *
 Methyl Methacrylate
 [MMA]
 Oxo Alcohols
 Propylene *
 Propylene Oxide *
 Rubber

Plastics & Polymers

ABS Resins
 Expandable Polystyrene
 [EPS]
 Nylon Engineering
 Resins
 Polycarbonate
 Polyethylene *
 Polypropylene *
 Polystyrene *

Inorganics

Chlor-Alkali *
 Soda Ash *
 Vinyls *
 Sodium Sulfate

Syngas Chemicals

Acetyls *
 Formaldehyde
 & Resins
 Methanol *
 MTBE

* World Analysis service available with Cost Curves in 2026

Cost Curves by Chemical Market Analytics

Plant-level cost and profitability data are now available as part of select World Analysis services. The Cost Curve model offers an integrated view of chemical plant costs and margins, built on millions of data points and validated by our team of industry experts. Through company-level feedstock and coproduct integration, the model captures the physical and economic configuration of each production complex. The Cost Curve dataset includes five years of history and long-term forecasts, providing baseline metrics for competitive analysis, strategic planning, and logistics assessment across major chemical value chains.

GREEN ECONOMY

BIOFUELS

BIOMASS / PLANTS / ANIMAL FAT

Beef Tallow
Corn & Corn Oil
Canola Oil
Poultry Fat
Soybeans & Oil
Yellow & White Grease

CARBON

Carbon Credits
Carbon Offsets
Carbon Neutral Fuel Index
Rins

SOLAR

Ingots
Polysilicon
Solar Cells
Solar Panels
Wafers

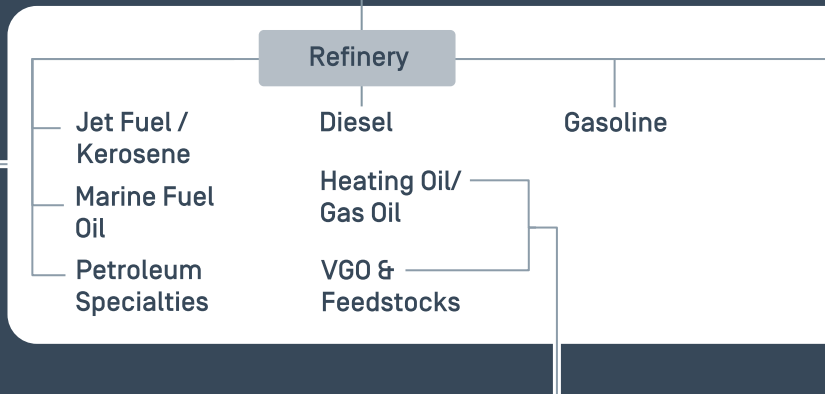
RECYCLED PLASTICS

Nylon
Polyester
Polystyrene
Polypropylene
Polyethylene
PVC

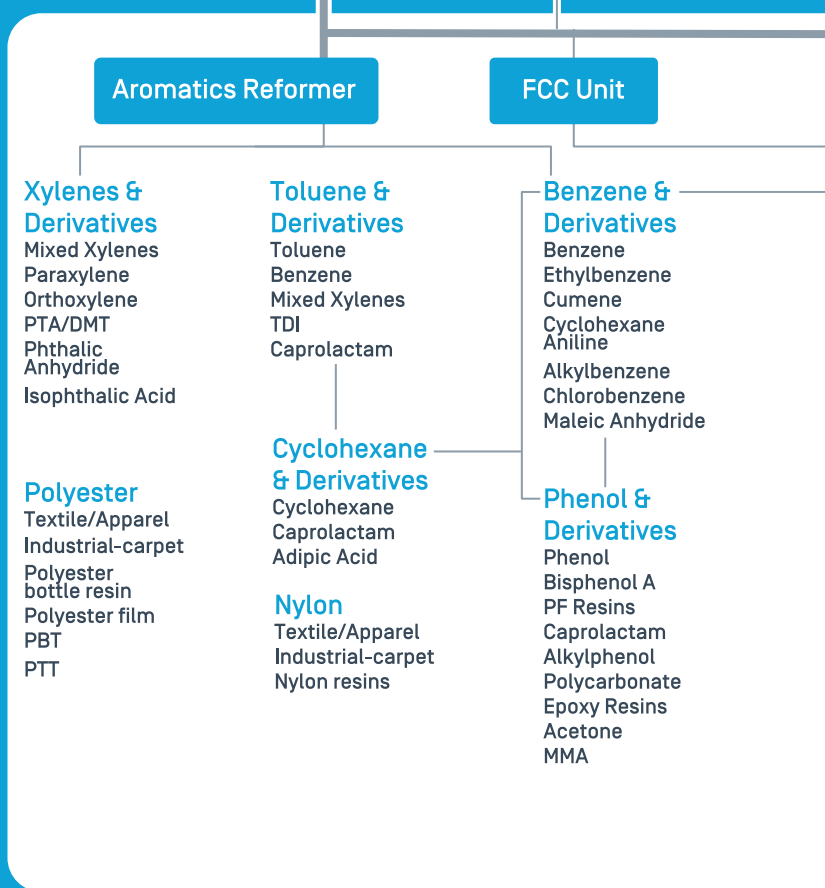
BUILDING BLOCKS

CRUDE OIL

REFINED PRODUCTS & NGLS

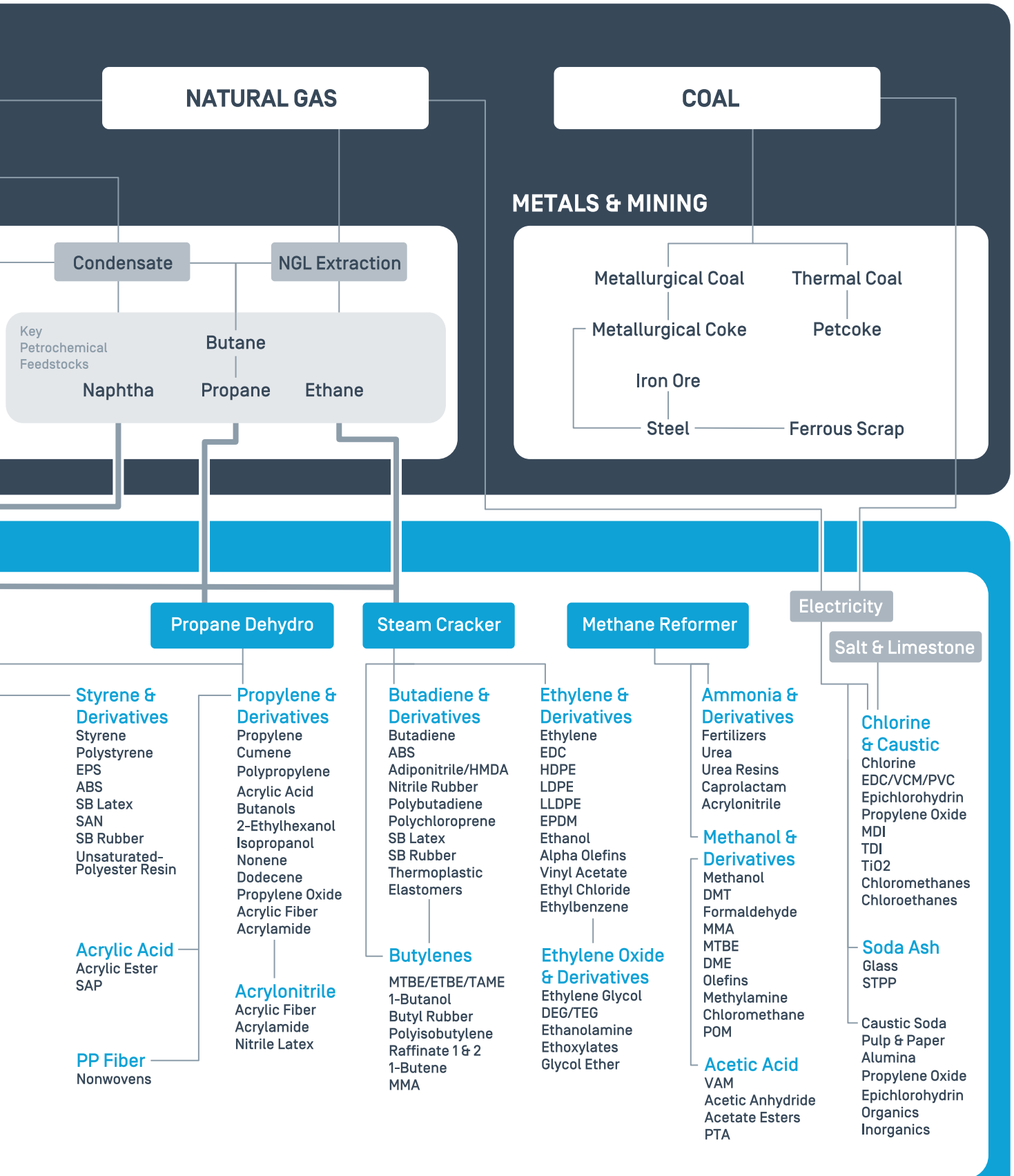


PETROCHEMICALS



OVER 350 CHEMICALS COVERED!

FOSSIL BASED ECONOMY





Energy & Feedstocks

Strategic intelligence tailored for the chemicals value chain

It is a comprehensive, forward-looking view of the critical market drivers impacting the base chemicals value chain, including feedstock availability, cost competitiveness, and policy trends



Energy and feedstock stability are critical to the chemical value chain, but global disruptions, price volatility, and shifting regulations have made certainty increasingly elusive.

Our solutions empower you to:

- ✓ Reduce exposure to price shocks
- ✓ Secure reliable supply sources
- ✓ Anticipate regulatory and policy shifts
- ✓ Align operations with macro and regional trends

Our Energy Intelligence Portfolio

Oil, Gas & Refined Products Intelligence

Comprehensive macro-level and refined products data to inform strategic planning

- Energy Macro Service
- Global Energy + Oil Demand Analysis

NGL & Naphtha Intelligence

Deep insight into global trade flows, pricing dynamics, and feedstock competitiveness

- Global Ethane Outlook
- Global LPG Outlook
- Global Naphtha Outlook
- NGL & Naphtha Service





Our Energy Intelligence Portfolio

Strategic intelligence tailored for the chemicals value chain. It is a comprehensive, forward-looking view of the critical market drivers impacting the base chemicals value chain, including feedstock availability, cost competitiveness, and policy trends

NGL & Naphtha Intelligence

NGL & Naphtha Service

Delivers an integrated analysis of NGL and refinery-grade naphtha markets, including pricing insights and supply-demand forecasts through 2026. Designed for short-term procurement planning and mid-term strategy across petrochemical and refining markets.

Global LPG Outlook

Offers a comprehensive view of the global LPG market, with forecasts through 2026 and extended outlooks to 2060. Covers supply-demand balances, trade flows, pricing, arbitrage opportunities, and policy impacts to support procurement and feedstock decisions.

Global Naphtha Outlook

Delivers cut-level insight into global naphtha markets, covering pricing, supply and demand dynamics, and trade flows across natural gasoline, light, and heavy naphtha. Supports informed commercial and strategic decision-making with a global view.

Global Ethane Outlook

Provides in-depth analysis of ethane demand and market dynamics, with long-term forecasts through 2050. Supports scenario modeling, investment planning, and regional strategy from a global perspective.

Oil, Gas & Refined Products Intelligence

Energy Macro Services

Provides a strategic overview of global oil, gas, and refined products markets, connecting macroeconomic trends, policy developments, and market fundamentals. Includes forecasts through 2026 to track key energy price drivers affecting the chemical industry.

Global Energy & Oil Demand Analysis

Examines global refined product demand across transportation, petrochemical, and industrial sectors, with long-term forecasts to 2050. Supports long-term investment decisions, scenario analysis, and regional market planning.



Chemical Consulting Services

Chemical Market Analytics provides consulting services under five broad industry themes, elevating the decision-making process for our clients:

FINANCIAL & INVESTMENT ADVISORY



STRATEGIC & SUSTAINABILITY CONSULTING



Transactions & Investment Advisory

End-to-end M&A support, including buy- and sell-side due diligence, project finance advisory, opportunity prospecting, and market- and pricing-based investment evaluation.



Scenario & Risk Analysis

Corporate and financial scenario development covering crude-to-chemicals shifts, energy transition impacts, commodity pricing, policy changes, economic uncertainty, trade risks, and geopolitical events.



Circular Economy & Technology Strategy

Circular economy masterplans, target-driven strategies, technology reviews, feasibility assessments, feedstock and commercial strategies, and polymer-specific value-chain analysis.



Strategic Market & Asset Development

In-depth market studies, bespoke value-chain deep dives, greenfield and brownfield advisory, refinery integration, and corporate or national masterplan development.



Carbon & Low-Carbon Transition Strategy

Corporate carbon strategy development, emissions benchmarking, supply-chain analysis, carbon market assessment, and advisory on low-carbon fuels including blue/green ammonia, methanol, SAF, and biofuels.

UPCOMING EVENTS

World Chemical Forum

25–26 March 2026 | The Woodlands, Texas

Global Chlor-Alkali & Vinyls Conference

Istanbul, Türkiye | 5 - 6 May 2026

World Soda Ash Conference

Europe | September / October 2026

World Methanol Conference

Europe | September / October 2026

Global Plastics Summit

Houston, TX | 2 - 4 November 2026

Acrylonitrile & C4 Forum

Asia | November 2026

Event Enquiries

rebecca.lopez@chemicalmarketanalytics.com

nicole.morris@chemicalmarketanalytics.com

Sponsorship Opportunities

dcoates@opisnet.com



WORLD CHEMICAL FORUM
Innovate. Evolve. Thrive.

25–26 MARCH 2026
THE WOODLANDS, TEXAS

Visit our
event page



OPIS, a Dow Jones company, provides price transparency across the global fuel supply chain, enabling stakeholders to buy and sell energy commodities with confidence. We do this via multi-platform access to accurate data, real-time news, powerful software and educational events. OPIS brands include Chemical Market Analytics, PetroChem Wire, McCloskey and Axxis. Our commitment to reliability is reinforced by personalized customer service and constant innovation. OPIS listens to what energy stakeholders need and responds with flexible and easy-to-use products. Navigating world fuel markets is complex — OPIS makes it simpler.

CUSTOMER SERVICE

+1 301.966.7270 or
+1 888.301.2645 [toll-free within the U.S.]

EMAIL

energy@opisnet.com